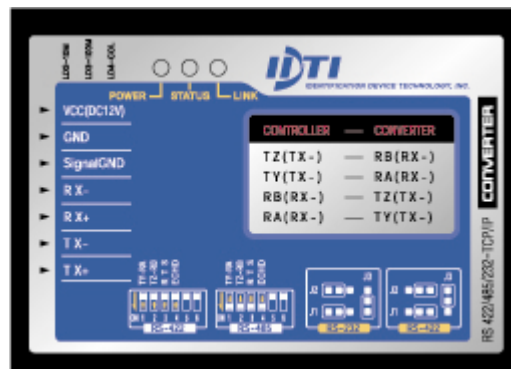


NetLink-T Series Operations Manual

© 2005 IDTi



NetLink-T

User Manual

Manual COPYRIGHT (C) 2004 IDT Inc. All rights reserved.

The Information in this document is subject to change without notice. IDT Inc. reserves the right to revise this document and to make changes from time to time in the content hereof without obligation to notify any person or persons of such revisions or changes.

The software described in this document is supplied under a license agreement and is protected by international copyright laws. You may copy it only for the purpose of backup and use it only as described in the License agreement.

Any implied warranties including any warranties of merchantability or fitness for a particular purpose are limited to the terms of the express warranties set out in the license agreement.

Program COPYRIGHT (C) 2003-2004 IDT Inc. All rights reserved.

Trademarks

NetLink-T is a registered trademark of IDT Inc.

BioScan is a registered trademark of IDT Inc.

BSR-101 is a registered trademark of IDT Inc.

Other products, trademarks or registered trademarks are the property of their respective owners.

NetLink-T User Manual

© 2006 IDTi

Limited Warranty

All Products sold to Dealer hereunder shall be subject to IDTi standard warranty for the Product included with the Product by IDTi ("Product Warranty"). The Product Warranty shall be extended to end user purchasers of the Products from Dealer who purchases such Products within twelve (12) months of the date the Products are shipped to Dealer. Provided within the aforementioned time period, the warranty period for a Product shall commence upon the date stated in the Product Warranty. Dealer shall not extend any warranty regarding the Products other than IDTi then standard warranty. The limited warranty statement included in the Product Warranty is the exclusive statement of the controlling terms and conditions of the limited warranties on the Products. Nothing in this Agreement or any other written document or any oral communications with Dealer or other parties may alter the terms and conditions of the Product Warranty. IDTi may, in its sole discretion, revise its limited warranties from time to time, however; no change in limited warranties will affect Product orders already accepted by IDTi. Dealer agrees to only pass on to Dealer's end-users IDTi limited warranties and Dealer will be liable for any greater warranty that Dealer purposely or inadvertently transfers to end-users. Dealer will indemnify, defend and hold IDTi harmless for any damages or other costs that arise because of Dealer's failure to properly inform Dealer's end-users of current limited warranties.

Warranty Disclaimer: IDTi MAKES NO EXPRESS OR IMPLIED WARRANTIES FOR THE PRODUCTS EXCEPT THOSE INCLUDED IN THE PRODUCT WARRANTY. IDTi DISCLAIMS ALL OTHER WARRANTIES, EXPRESS OR IMPLIED, INCLUDING, WITHOUT LIMITATION, IMPLIED WARRANTIES OF MERCHANTABILITY AND FITNESS FOR A PARTICULAR PURPOSE.

Table of Contents

Foreword	0
Part I Overview	2
Part II TCP/IP Parameters (NetLink-T)	4
1 Setting TCP/IP Configuration (NetLink-T) Parameters	5
2 Setting PC' s TCP/IP Parameters (COPY)	6
Part III Installation	9
Index	0

Part

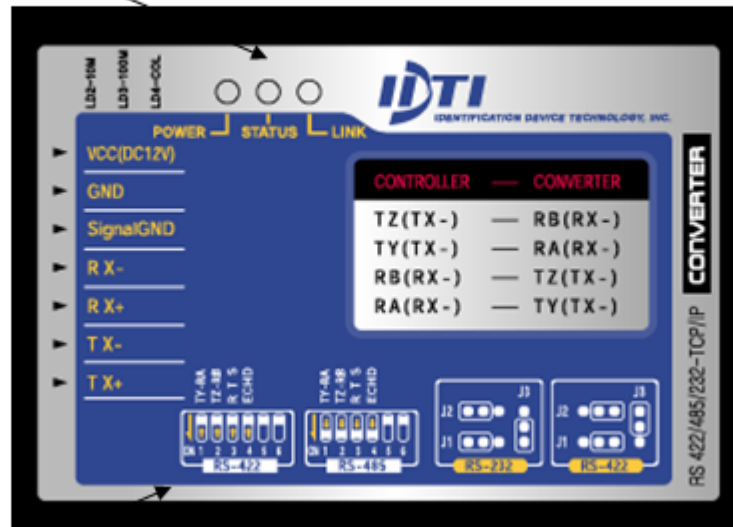


1 Overview

STATUS LED

CONNECTOR

DIP S.W



MACK JACK

Hard Ware Protocol : TCP/IP

Network Interface : 10/100 Base ?T Ethernet

Serial Output : RS-232/RS-422/RS-485

Serial Line Format : 8data, 1stop, none parity

Speed : 1200bps ~ 230Kbps

Temperature : -10C ~ 80C(operating), -40~85(Storage)

Humidity : 10~90%

Power : 6~12V, 300mA

Size : 90(L) * 25(H) * 64(W)

Part



2 TCP/IP Parameters (NetLink-T)

If you are using a BioScan Ethernet version or Ethernet Converter to communicate between the host computer and the access control network, you must first configure the TCP/IP Configuration on the network. Select TCP/IP radial button in Network Setup box and press TCP/IP Config button at the bottom.

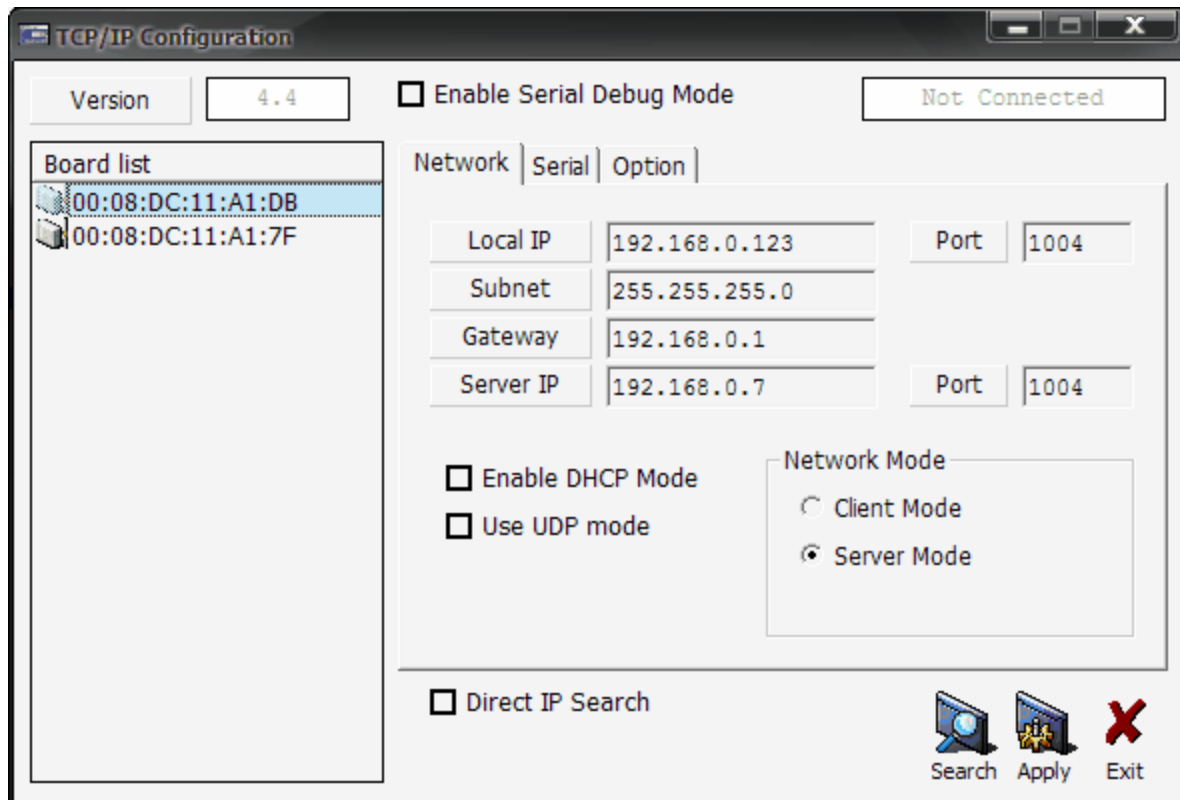
NOTE: A system or network administrator will be required to provide some of the necessary information for setup of the TCP/IP Configuration. From the ComPort Setup window, Click on the **TCP/IP** radio button and press **TCP/IP Config** button at the bottom. The Network Configuration window will add new fields for configuring the NetLink-T (see Figure 2-5 and 2-6).

1. **Local IP:** The abbreviation for Internet Protocol, IP refers to the set of communication standards that control communications activity on the Internet. An IP address is the number assigned to any Internet-connected computer.
 - A. **Port:** field to enter the number assigned to the computer running IntelliScan. The default is set at 1004, but will need to be changed if it conflicts with another device on the computer
2. **Subnet:** A subnet (short for "subnetwork") is an identifiably separate part of an organization's network. Typically, a subnet may represent all the machines at one geographic location, in one building, or on the same local area network.
3. **Gateway:** A gateway is a network point that acts as an entrance to another network
4. **Server IP:** IP Address of server. Typically HOST PC's IP Address.
 - A. **Port:** field to enter the number assigned to the computer running IntelliScan. The

default is set at 1004, but will need to be changed if it conflicts with another device on the computer

5. **Client Mode:** To select NetLink as Client.
6. **Server Mode:** To select NetLink as Server.
7. **Search Icon:** To search for connected NetLink in the network.

2.1 Setting TCP/IP Configuration (NetLink-T) Parameters



Setting TCP/IP Parameters

1. Press **Search** icon to search for NetLink in network. You will see a list of NetLink MAC Address in network on Board List monitor.
2. Select NetLink by pressing the **MAC address** of **NetLink in Board List**.
3. Enter in IP address of NetLink in **Local IP** field.
4. Enter port number in **Port** field. The default is set at 1004, but will need to be changed if it conflicts with another device on the computer.
5. Enter subnet of the IP address in **Subnet** field.
6. Enter gateway IP address in the **Gateway** field.
7. Enter Server IP address in the **Server IP** address. This would be the **HOST PCs IP** address.
8. Enter Port number of the **HOST PCs Port** number in **Port** field. This must be the same of the Port number of the Local IP address.
9. Select **Client Mode** radial button.
10. Press **Apply** icon at the bottom to save the settings. If TCP/IP Config parameters are not saved before exiting the setup window, the data entered is lost and must be re-entered.

NOTE: Press the Direct IP Search Radio button to directly enter the IP address of the converter and press the Search icon to search for previously installed converters.

2.2 Setting PC' s TCP/IP Parameters (COPY)

If you're using direct TCP/IP Direct connection:

1. Select the Port in Port Selection.
2. Select TCP/IP Direct in Network Setup.
3. Click on Client Mode in Server Mode Setup.

The screenshot shows two panels: 'Port Selection' and 'Network Setup'. In 'Port Selection', 'TCP/IP 1' is selected. In 'Network Setup', 'TCP/IP Direct' is selected. Below these is the 'Server Mode Setup' panel with 'Client Mode' selected.

4. Enter in No Response Frequency Limit. Default is set to 3.
5. Enter in Reception Buffer. Default is set to 3072.
6. Enter in Device IP Address. This would be the IP address of the unit.
7. Enter the IP Port number. This would be the same IP Port number assigned to TCP/IP Configuration.
8. Press the Apply button at the bottom right.

The 'Main Setup' panel contains several fields: 'No Response Frequency Limit' (3), 'Port Reception Buffer' (3072), 'Polling Interval' (200ms), 'Device IP Address' (192.168.0.7), and 'IP Port' (1004).

If you're using a TCP/IP Converter:

1. Select the Port in Port Selection.
2. Select TCP/IP NetLink-T in Network Setup.
3. Click on Client Mode in Server Mode Setup.

The screenshot shows two panels: 'Port Selection' and 'Network Setup'. In 'Port Selection', 'TCP/IP 1' is selected. In 'Network Setup', 'TCP/IP Netlink-T' is selected. Below these is the 'Server Mode Setup' panel with 'Client Mode' selected.

4. Enter in No Response Frequency Limit. Default is set to 3.
5. Enter in Reception Buffer. Default is set to 3072.
6. Enter Polling Interval. Default is set to 200ms.
7. Enter in Device IP Address. This would be the IP address of the unit.
8. Enter the IP Port number. This would be the same IP number assigned to TCP/IP Configuration.

9. Press the Apply button at the bottom right.

Main Setup

No Response Frequency Limit	3	Port Reception Buffer	3072
Polling Interval	200ms		
Device IP Address	192.168.0.7	IP Port	1004

Part



3 Installation

